

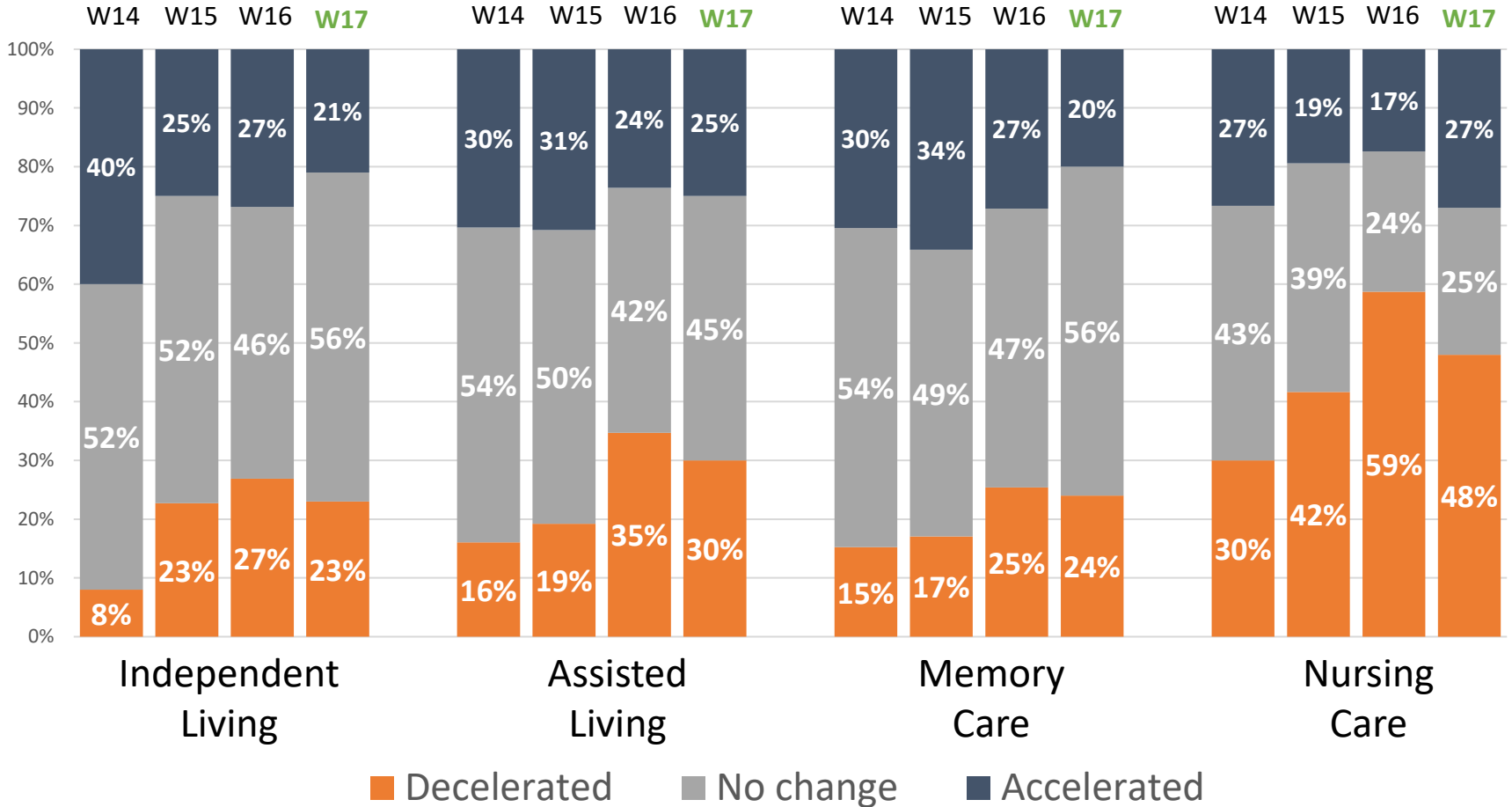
# Executive Survey Insights

## Wave 17, Nov. 30 – Dec. 13, 2020

---

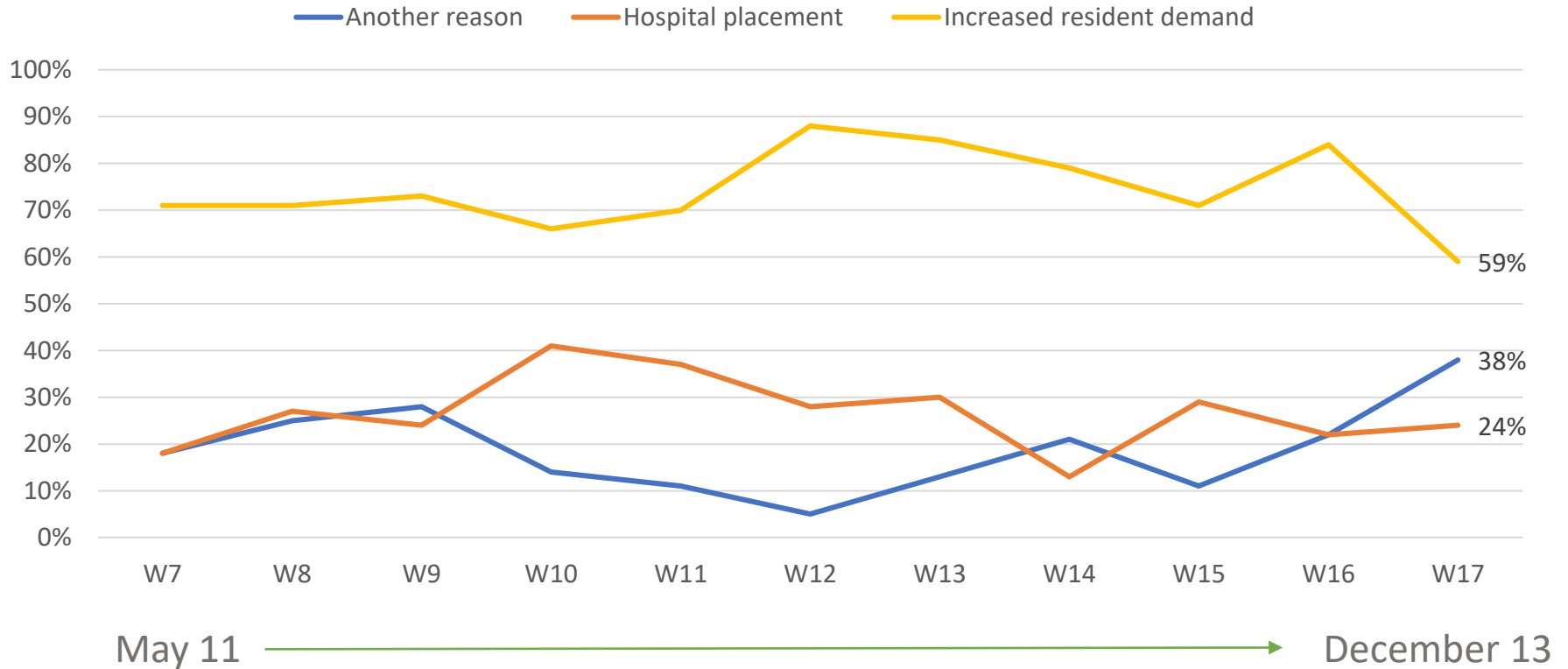
- Report Graphs

## Pace of Move-Ins in Past 30-Days



Wave 14 responses collected October 12 to October 25, 2020  
 Wave 15 responses collected October 26 to November 8, 2020  
 Wave 16 responses collected November 9 to November 22, 2020  
 Wave 17 responses collected November 30 to December 13, 2020  
 Totals may not add to 100% due to rounding  
 Source: NIC Executive Survey Insights

## Reasons for Acceleration in Move-Ins in Past 30-Days

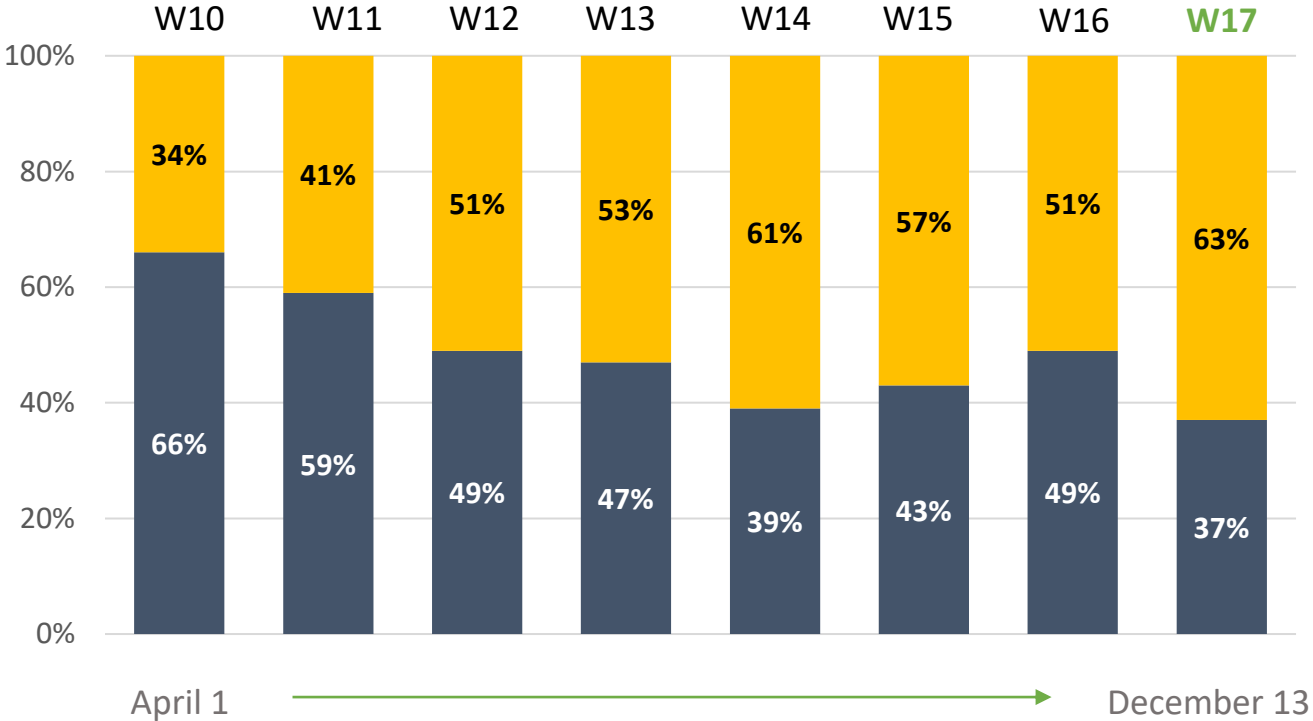


Question was not asked prior to May 11, 2020

Source: NIC Executive Survey Insights

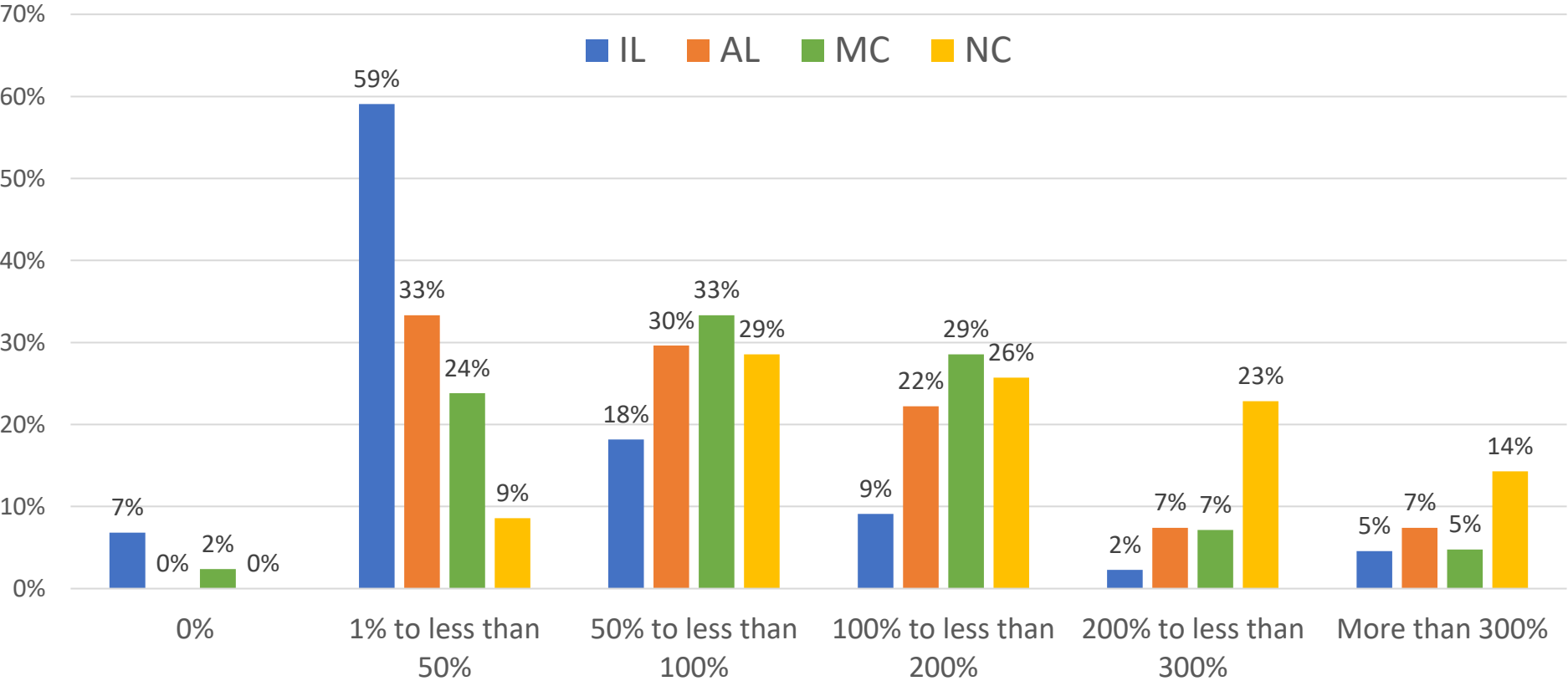
# Organizations Offering Rent Concessions

■ No ■ Yes



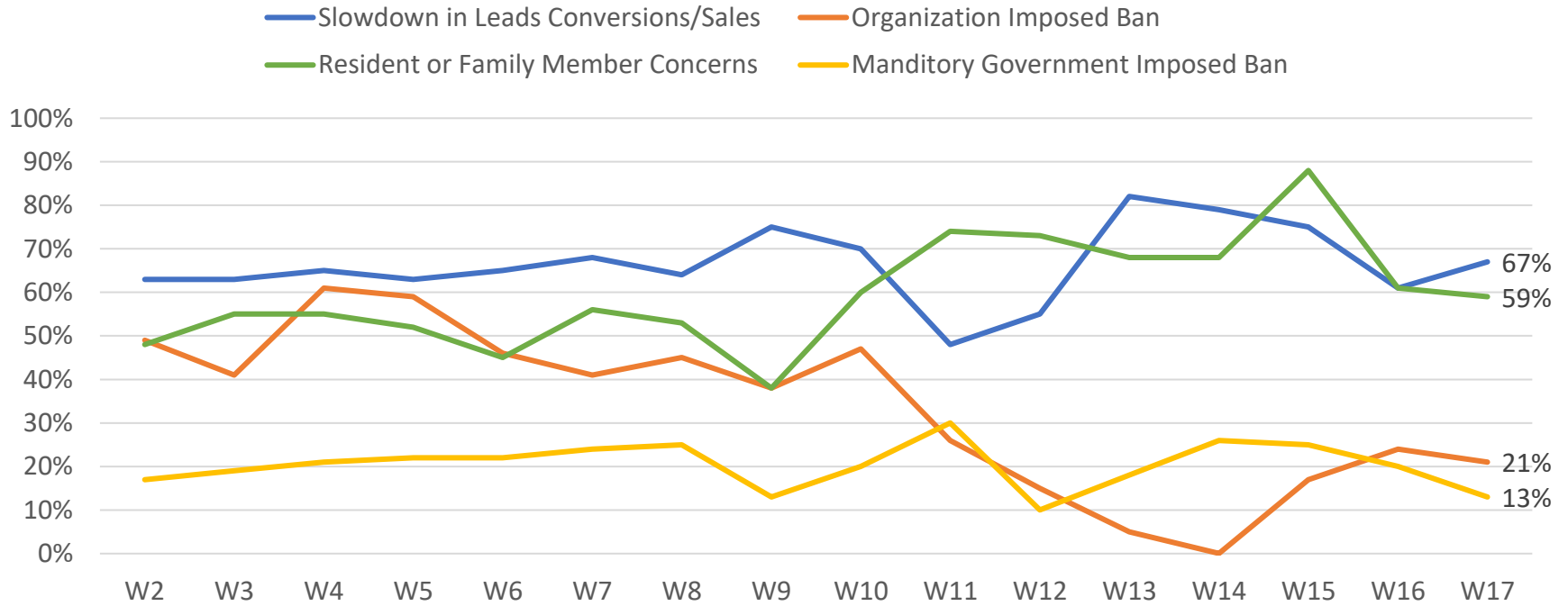
Source: NIC Executive Survey Insights

# Estimated Increase in PPE Budgets



Wave 17 responses collected November 30 to December 13, 2020  
 Source: NIC Executive Survey Insights

## Reasons for Deceleration in Move-Ins in Past 30-Days

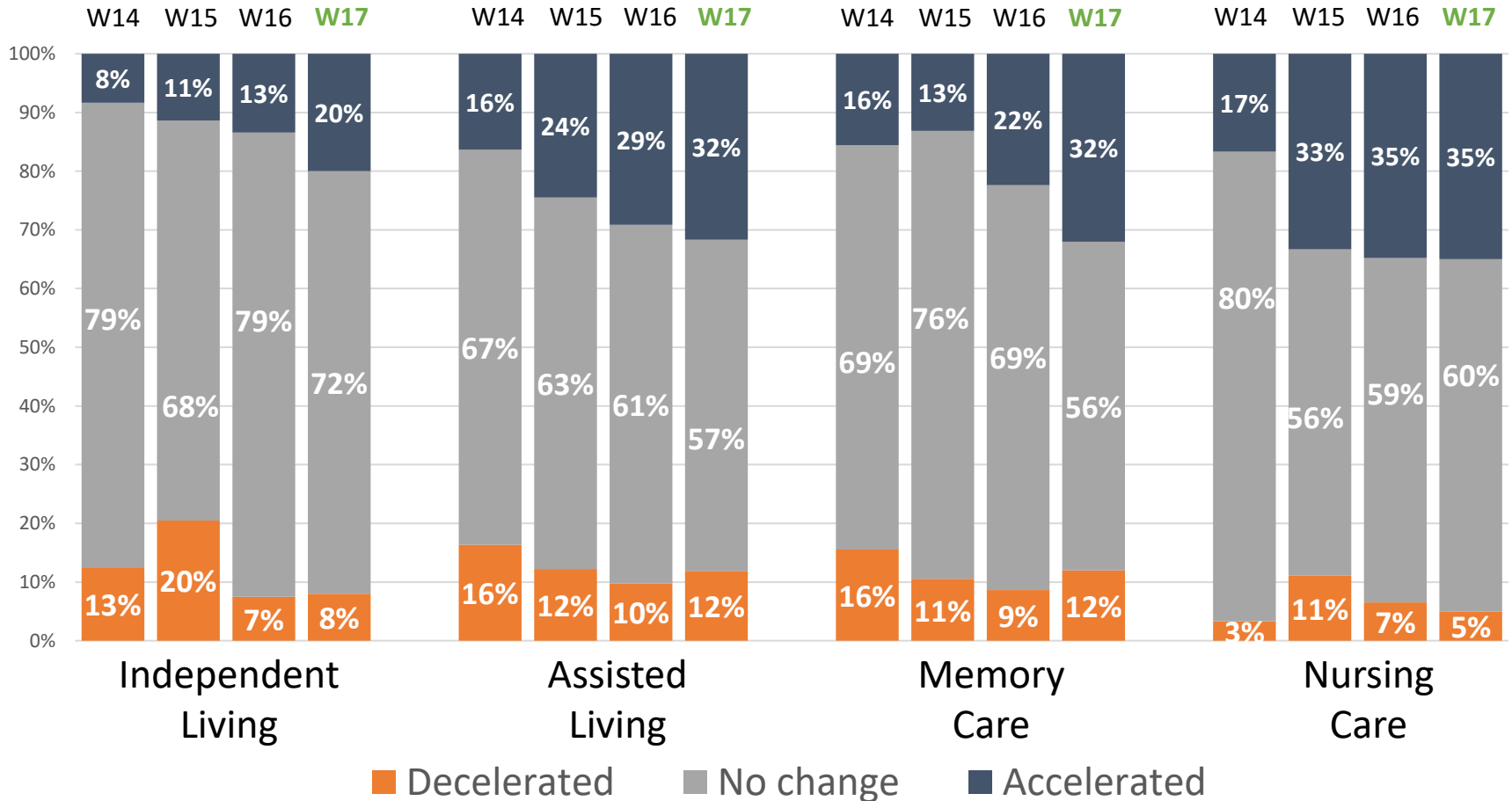


April 1 
→
 December 13

Question was not asked prior to April 1, 2020

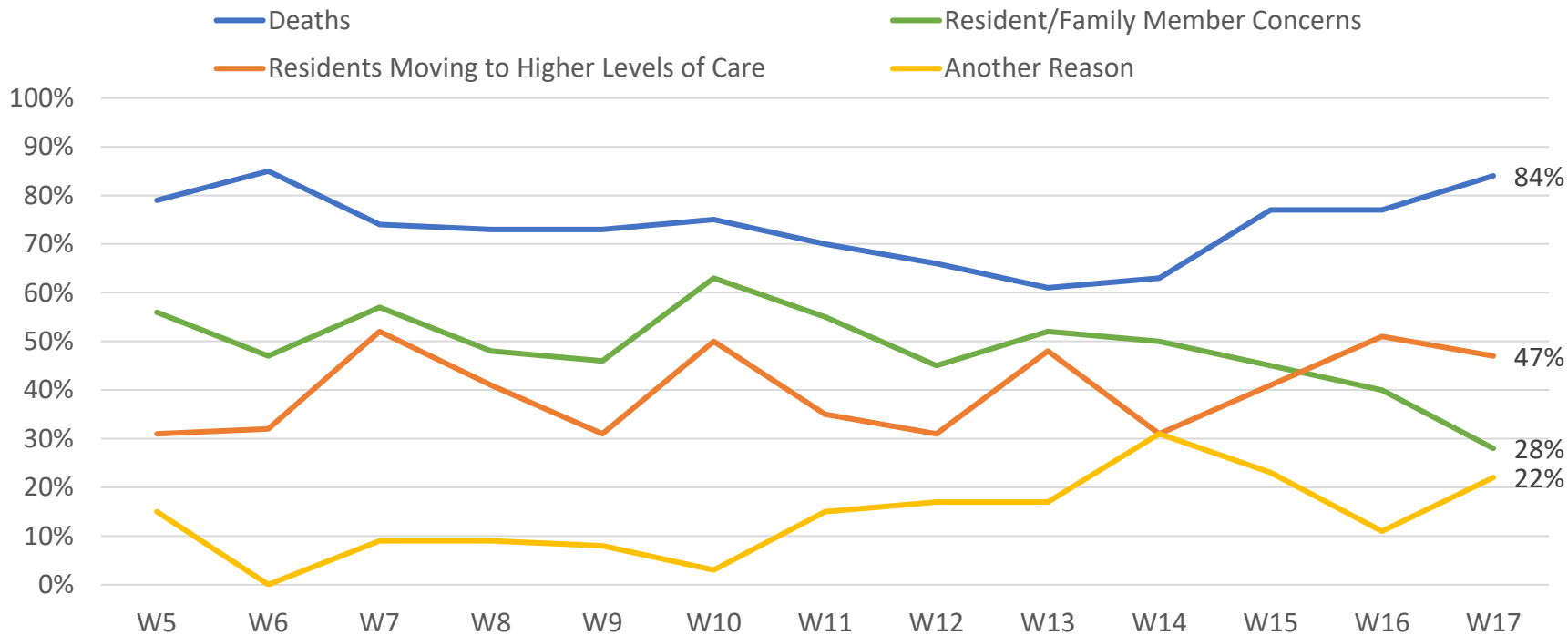
Source: NIC Executive Survey Insights

## Pace of Move-Outs in Past 30-Days



Wave 14 responses collected October 12 to October 25, 2020  
 Wave 15 responses collected October 26 to November 8, 2020  
 Wave 16 responses collected November 9 to November 22, 2020  
 Wave 17 responses collected November 30 to December 13, 2020  
 Totals may not add to 100% due to rounding  
 Source: NIC Executive Survey Insights

## Reasons for Acceleration in Move-Outs in Past 30-Days

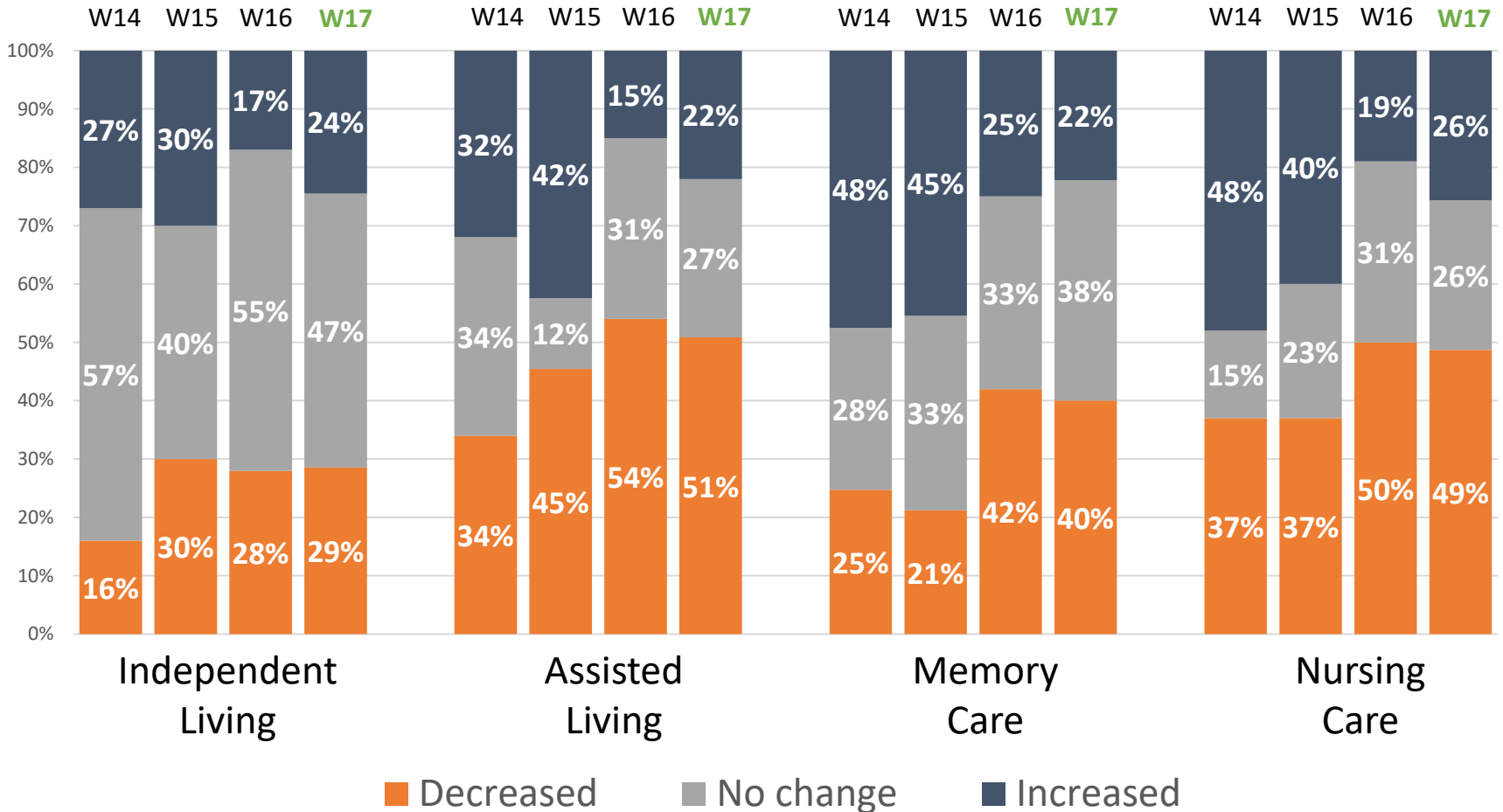


April 1 
→
 December 13

Question was not asked prior to April 1, 2020  
 Source: NIC Executive Survey Insights

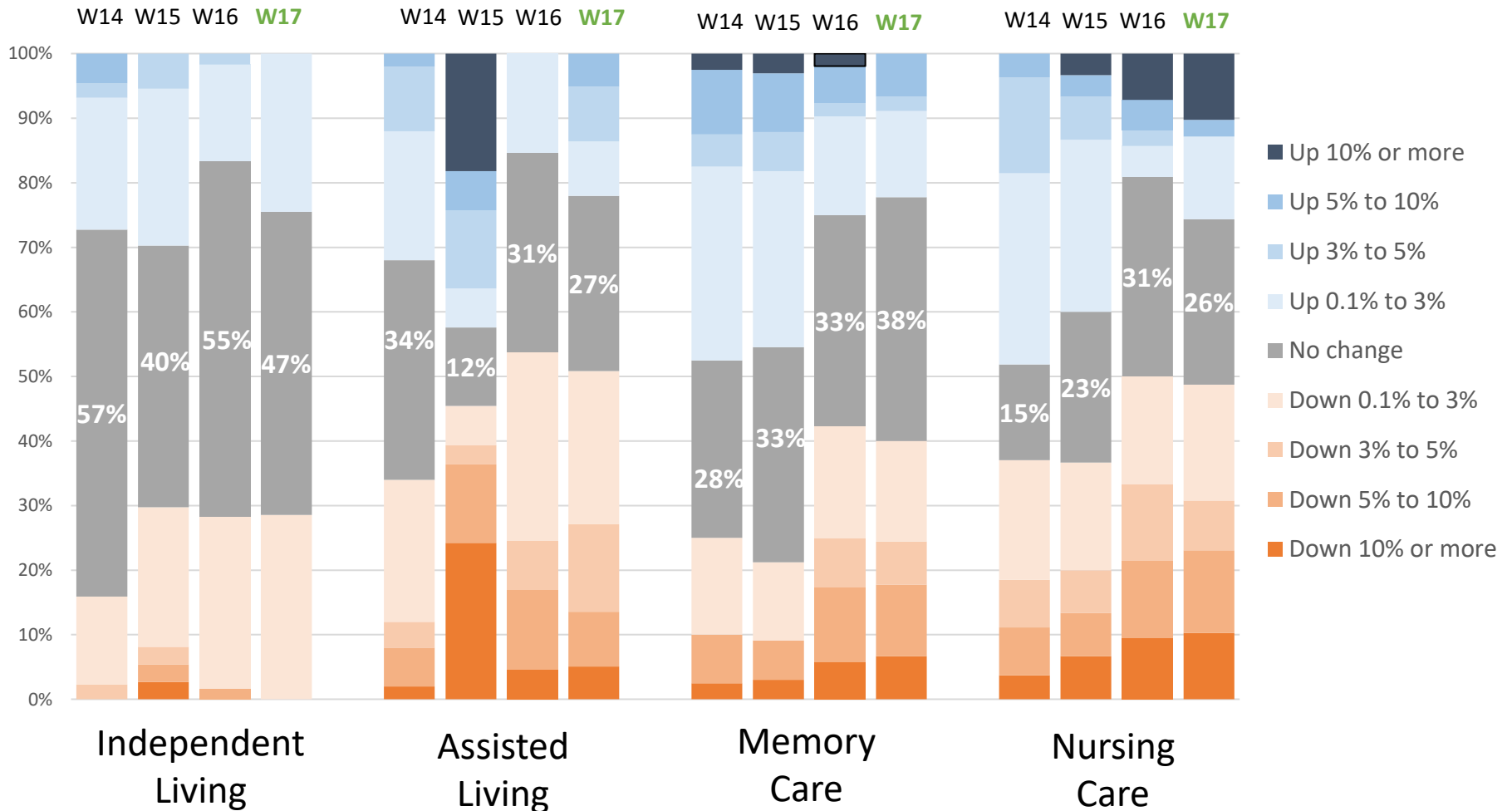


## Change in Occupancy by Care Segment: Current vs. One Month Prior



Wave 14 responses collected October 12 to October 25, 2020  
 Wave 15 responses collected October 26 to November 8, 2020  
 Wave 16 responses collected November 9 to November 22, 2020  
 Wave 17 responses collected November 30 to December 13, 2020  
 Totals may not add to 100% due to rounding  
 Source: NIC Executive Survey Insights

## Change in Occupancy By Care Segment: Current vs. One Month Prior



Wave 14 responses collected October 12 to October 25, 2020  
 Wave 15 responses collected October 26 to November 8, 2020  
 Wave 16 responses collected November 9 to November 22, 2020  
 Wave 17 responses collected November 30 to December 13, 2020  
 Totals may not add to 100% due to rounding  
 Source: NIC Executive Survey Insights