

Executive Survey Insights Waves 1-24

- Time Series Data
- March 24, 2020 – March 21, 2021

NIC Executive Survey Insights Timeline

Wave 1: 3/24 – 4/31

Wave 2: 4/1 – 4/12

Wave 3: 4/13 – 4/19

Wave 4: 4/20 – 4/26

Wave 5: 4/27 – 5/3

Wave 6: 5/4 – 5/10

Wave 7: 5/11 – 5/24

Wave 8: 5/25 – 6/7

Wave 9: 6/22 – 7/5

Wave 10: 7/20 – 8/2

Wave 11: 8/17 – 8/30

Wave 12: 9/15 – 9/27

Wave 13: 9/28 – 10/11

Wave 14: 10/12 – 10/25

Wave 15: 10/26 – 11/8

Wave 16: 11/9 – 11/22

Wave 17: 11/30 – 12/13

Wave 18: 12/14 – 12/27

Wave 19: 12/28 – 1/10

Wave 20: 1/11 – 1/24

Wave 21: 1/25 – 2/7

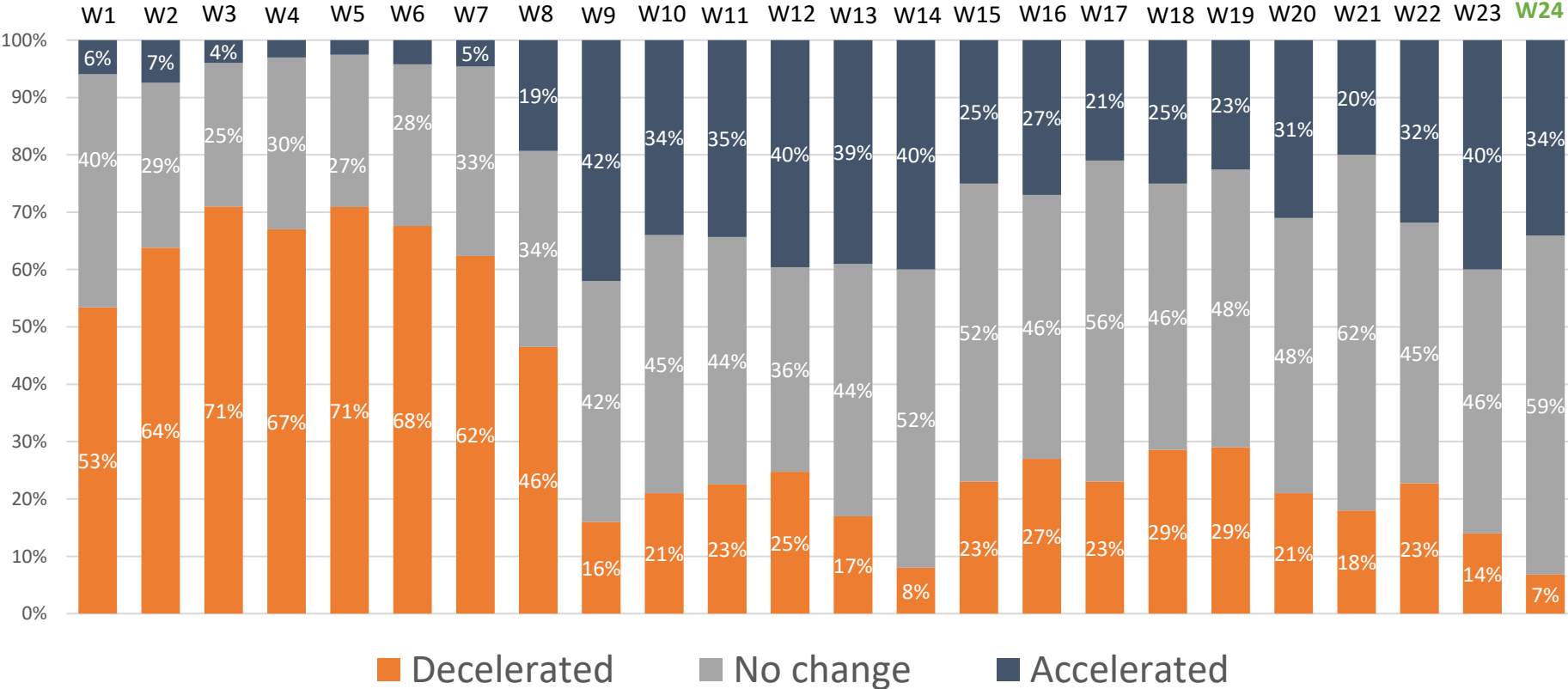
Wave 22: 2/8 – 2/21

Wave 23: 2/22 – 3/7

Wave 24: 3/8 – 3/21

Pace of Move-Ins by Care Segment

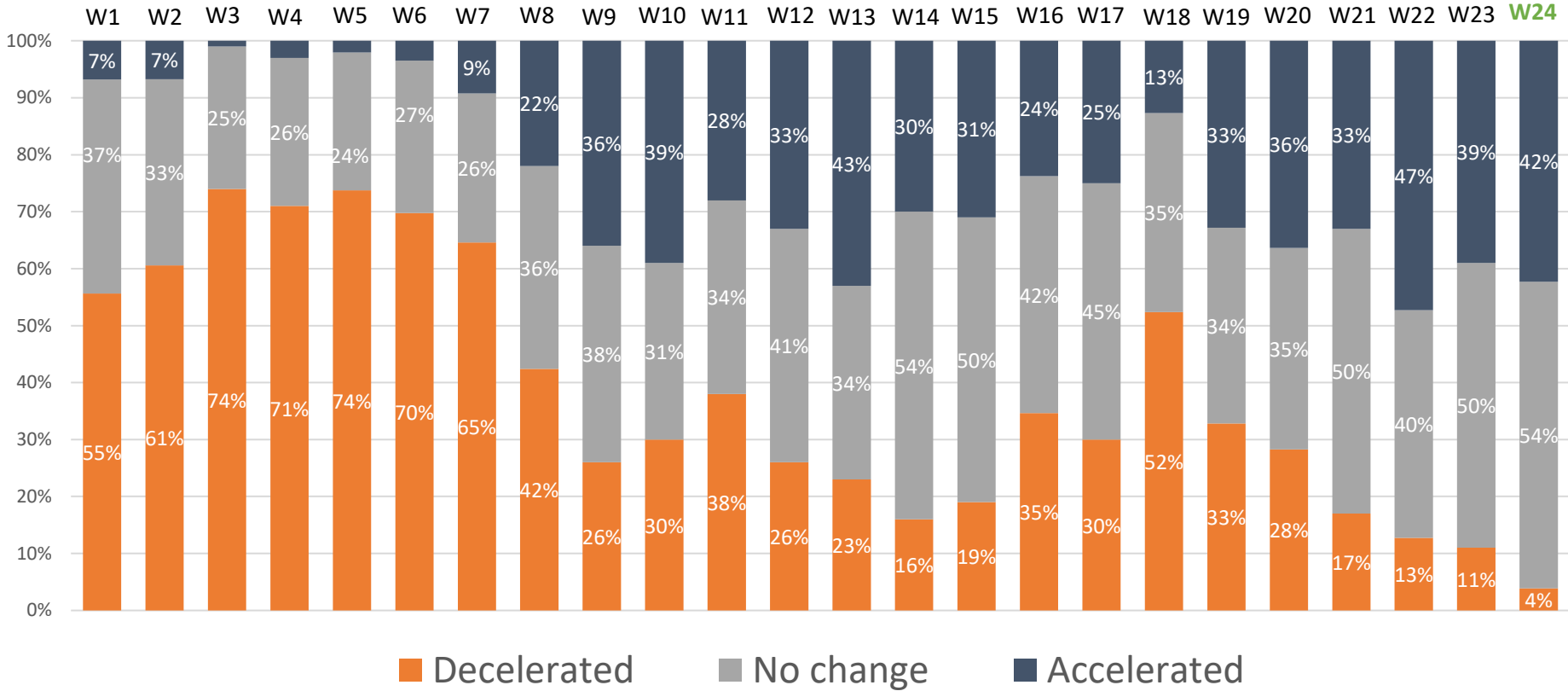
Pace of Move-Ins in Past 30-Days: Independent Living



March 24 March 21

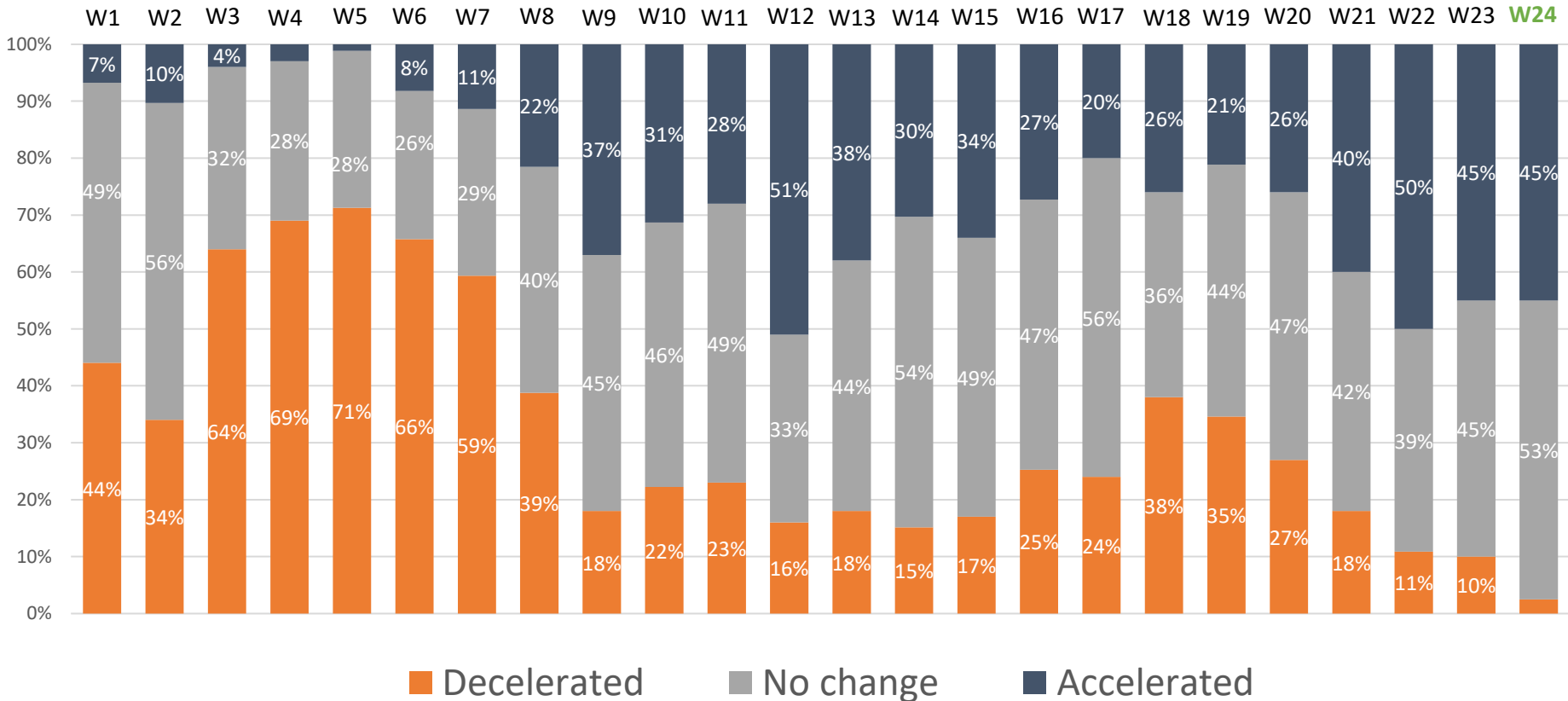
Totals may not add to 100% due to rounding
 Source: NIC Executive Survey Insights

Pace of Move-Ins in Past 30-Days: Assisted Living



Totals may not add to 100% due to rounding
 Source: NIC

Pace of Move-Ins in Past 30-Days: Memory Care



March 24

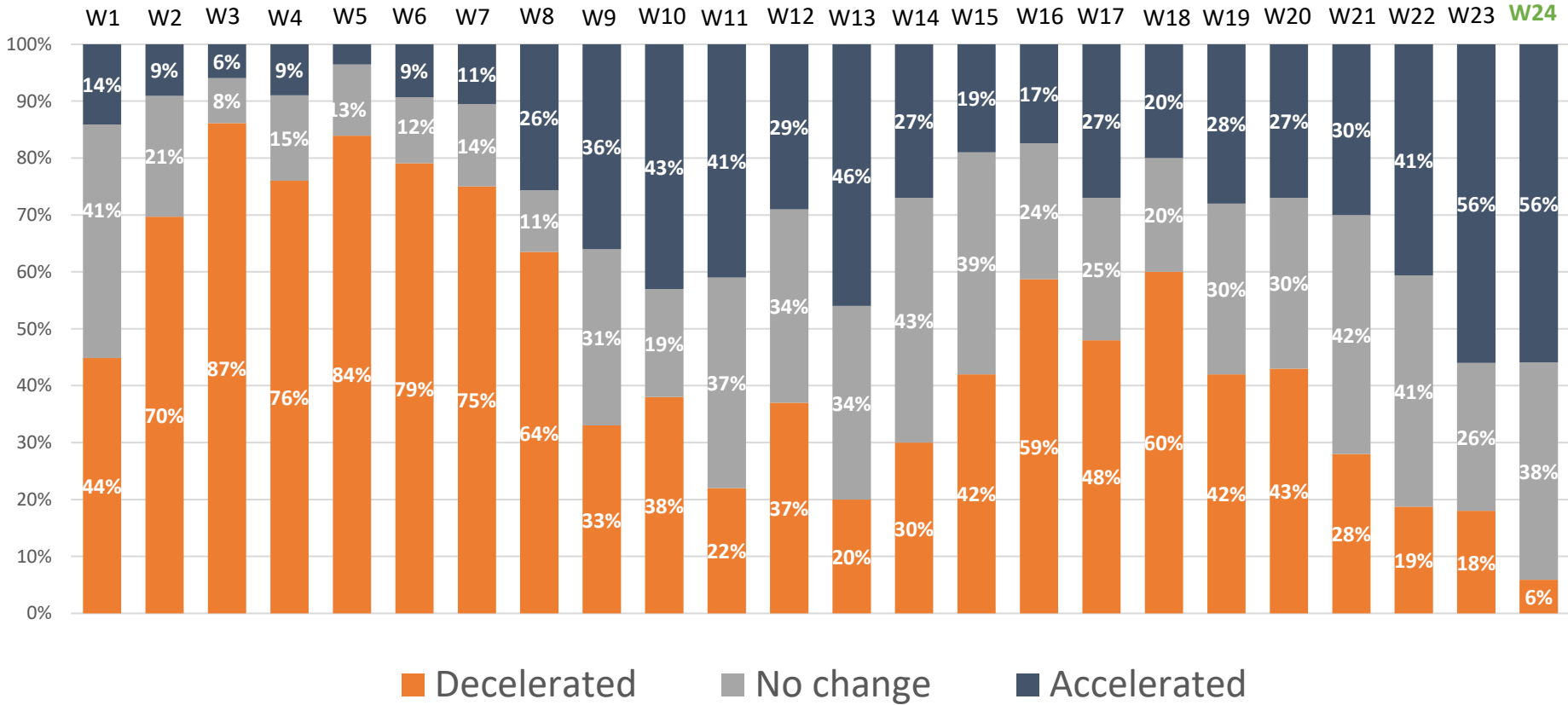


March 21

Totals may not add to 100% due to rounding

Source: NIC

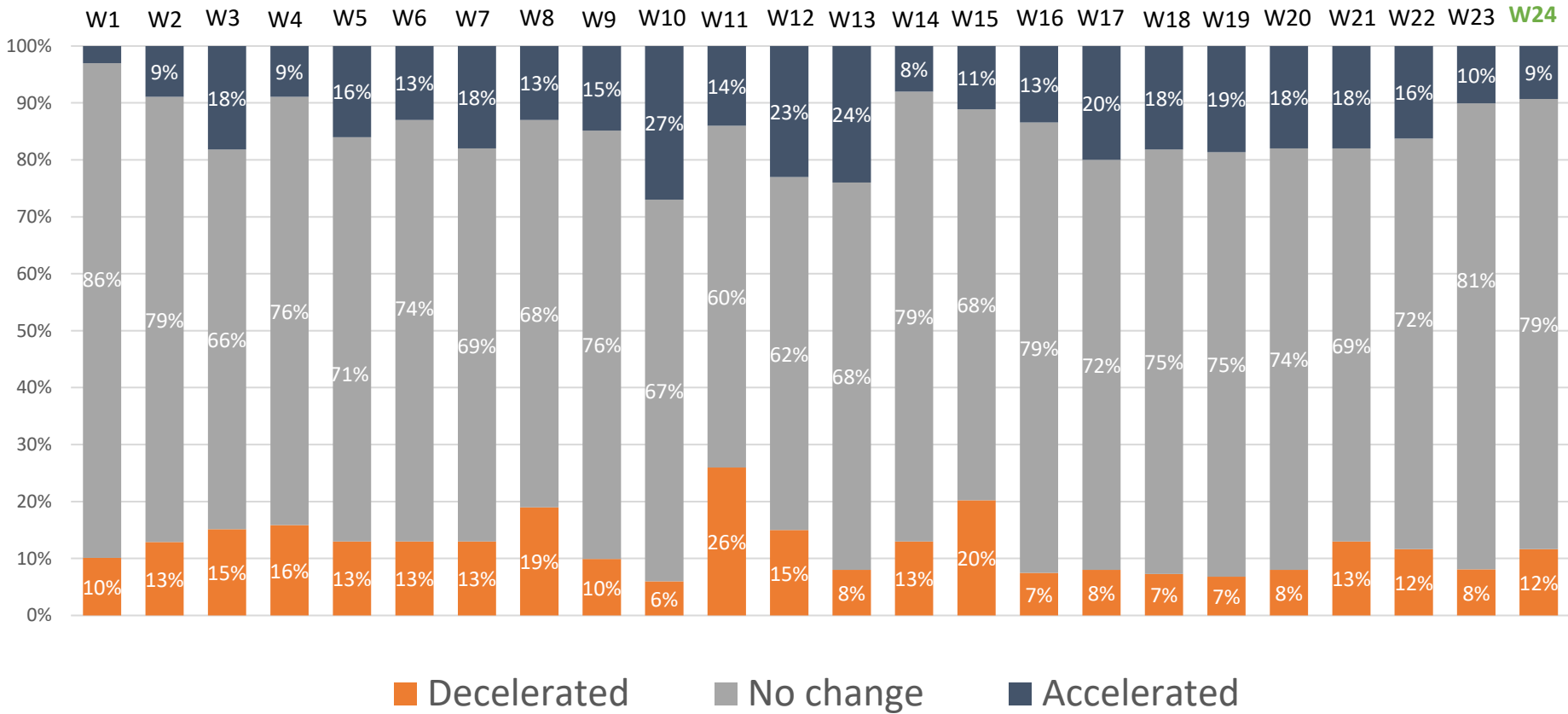
Pace of Move-Ins in Past 30-Days: Nursing Care



Totals may not add to 100% due to rounding
 Source: NIC

Pace of Move-Outs by Care Segment

Pace of Move-Outs in Past 30-Days: Independent Living

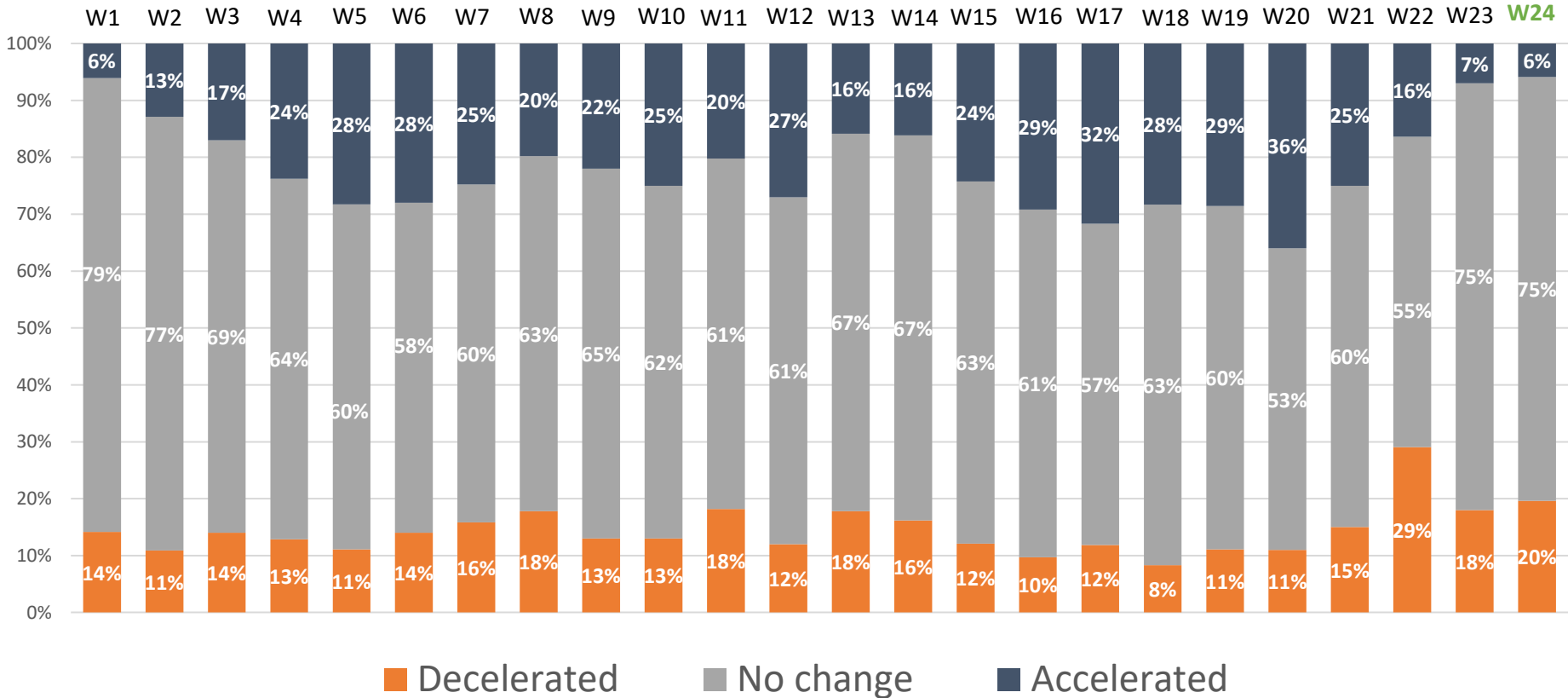


March 24

March 21

Totals may not add to 100% due to rounding
Source: NIC

Pace of Move-Outs in Past 30-Days: Assisted Living



March 24

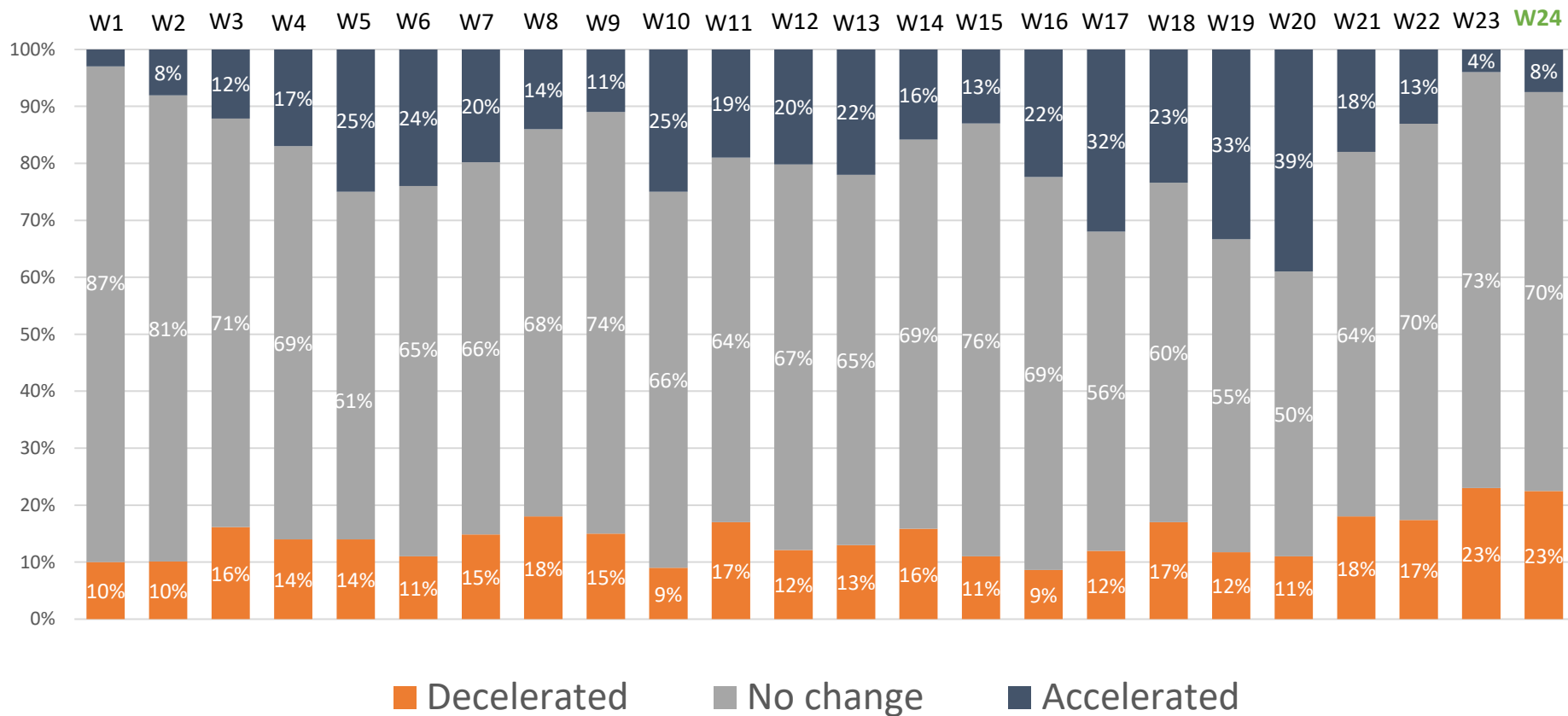


March 21

Totals may not add to 100% due to rounding

Source: NIC

Pace of Move-Outs in Past 30-Days: Memory Care



March 24

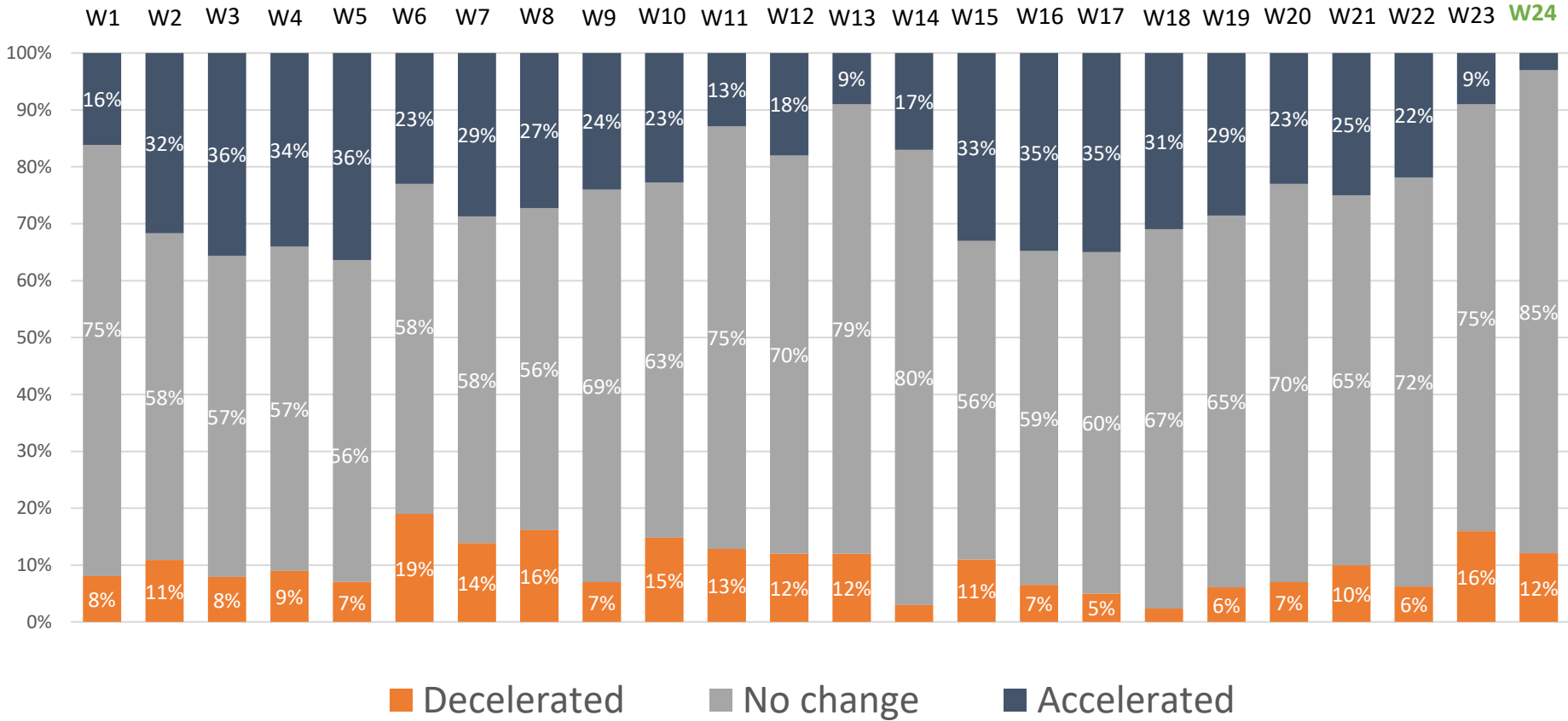


March 21

Totals may not add to 100% due to rounding

Source: NIC

Pace of Move-Outs in Past 30-Days: Nursing Care



March 24

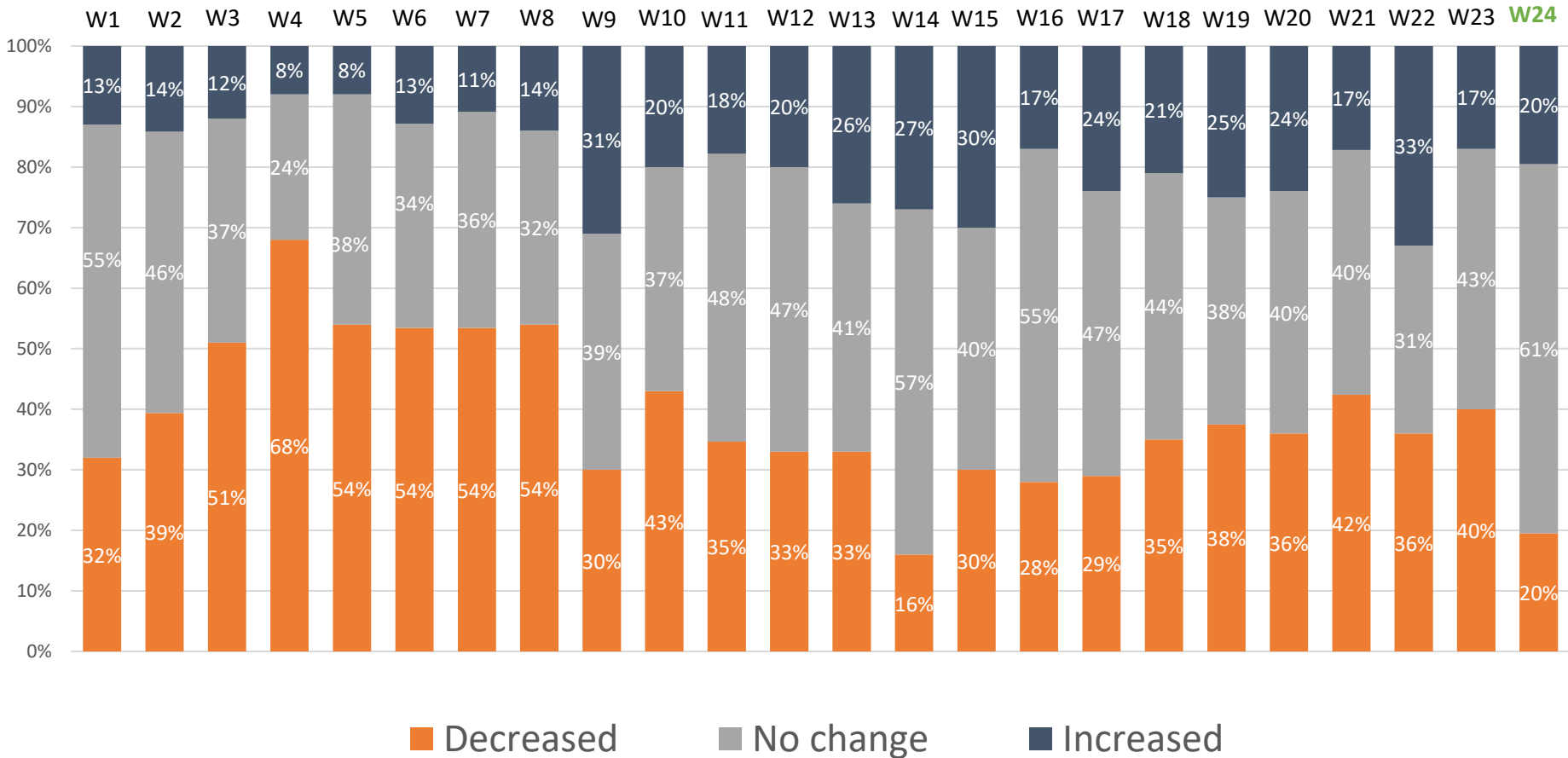


March 21

Totals may not add to 100% due to rounding
Source: NIC

Change in Occupancy by Care Segment

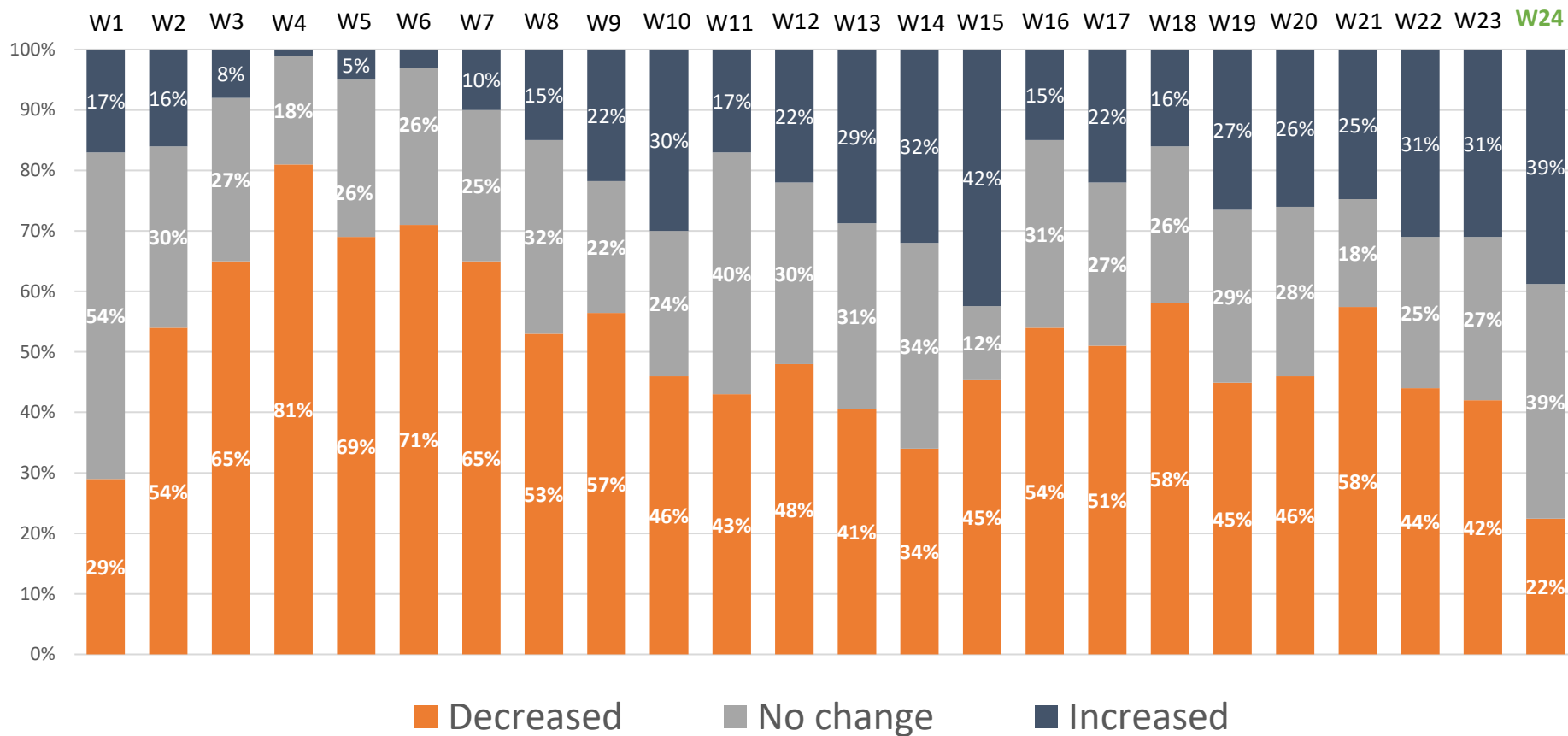
Independent Living Change in Occupancy: Current vs. One Month Ago



March 24 March 21

Totals may not add to 100% due to rounding
 Source: NIC

Assisted Living Change in Occupancy: Current vs. One Month Ago

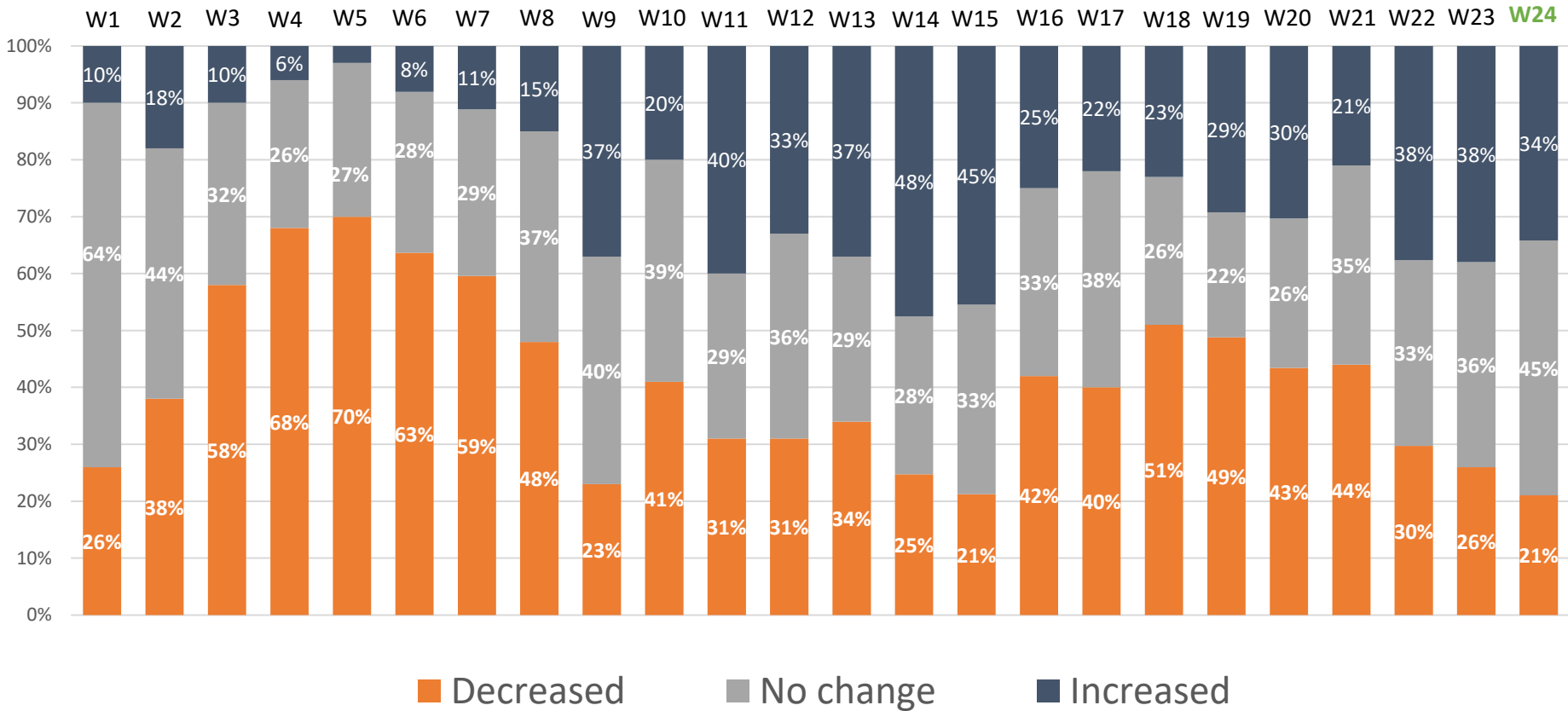


March 24

March 21

Totals may not add to 100% due to rounding
Source: NIC

Memory Care Change in Occupancy: Current vs. One Month Ago



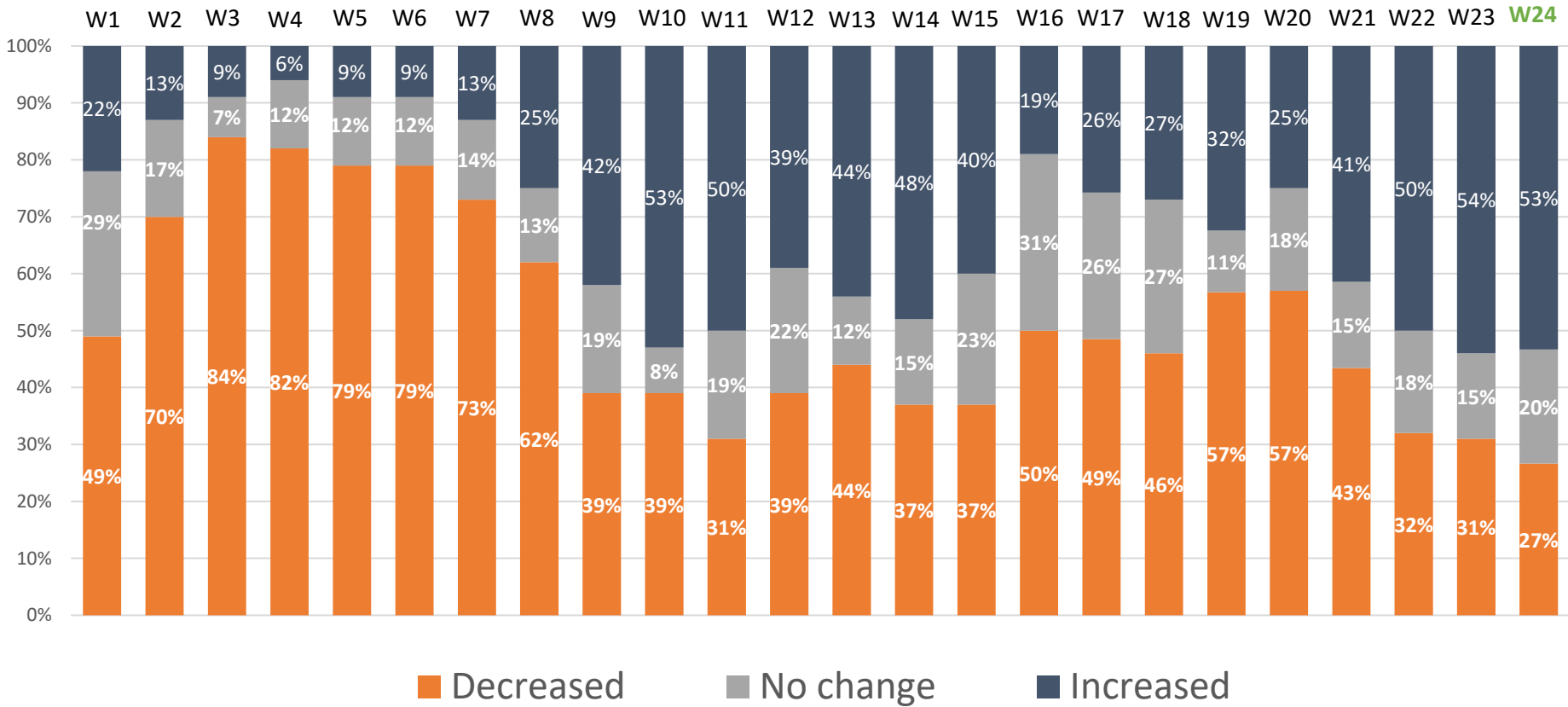
March 24



March 21

Totals may not add to 100% due to rounding
Source: NIC

Nursing Care Change in Occupancy: Current vs. One Month Ago



Totals may not add to 100% due to rounding
 Source: NIC